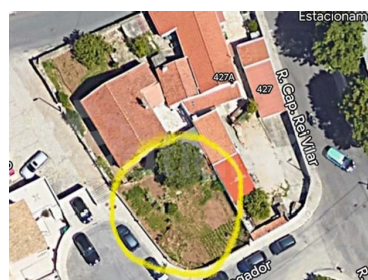




Alcabideche - Urban land



Land Area (m²)

N/A
CLASSE
ENERGÉTICA

250 000 €

(EUR €)

Land for construction of villa in Alvide

Urban land with 195 m² that allows the construction of a villa with 97.5 m² of construction area. It has the possibility of making two floors and a basement. Located in a

central area of Alvide, next to Pingo Doce, in a quiet and sunny square.

Excellent opportunity to build your dream villa, in an area where there are already few plots for construction available.

Alvide is a relatively central area of Cascais, with easy access to Cascais Hospital (5 minutes), Cascais Shopping (10 minutes) and the centre of Cascais (5 mins), as well as access to beaches and shopping areas and services and schools.



Carlos Mesquita

964 160 270 ² · 964 160 270 ²

carlos.mesquita@atlantichouses.net

T +351 923 013 419 ² · T 0 · E geral@atlantichouses.net
Oeiras Lagoas Park - Edifício 7, Piso 1, 2740-244 Porto Salvo, Portugal
AMI 13124

¹ (Call to national fixed network) | ² (Call to national mobile network)



Property Features

- Energetic certification: Exempt



Carlos Mesquita

964 160 270 ² · 964 160 270 ²

carlos.mesquita@atlantichouses.net

T +351 923 013 419 ² · T 0 · E geral@atlantichouses.net
Oeiras Lagoas Park - Edifício 7, Piso 1, 2740-244 Porto Salvo, Portugal
AMI 13124

¹ (Call to national fixed network) | ² (Call to national mobile network)